

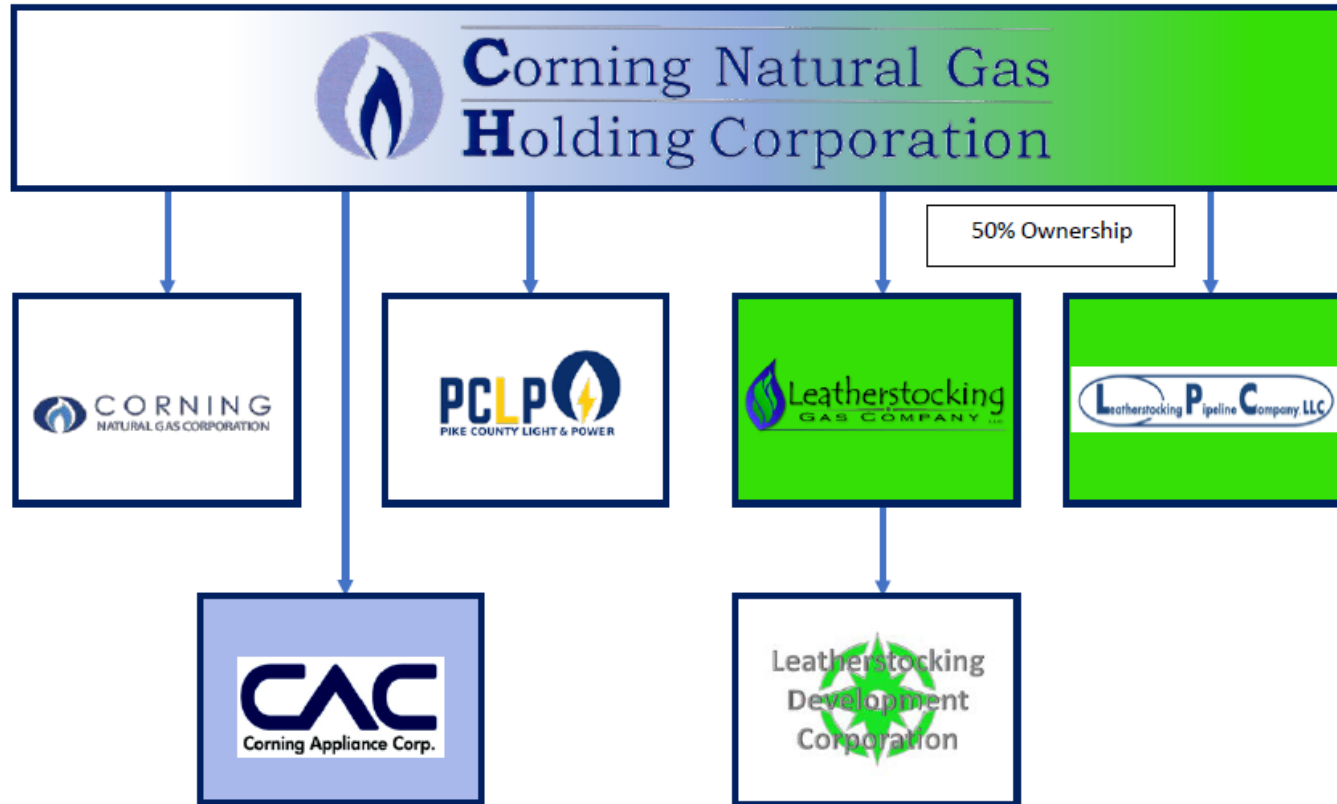


Corning Natural Gas
 Holding Corporation

2017 ANNUAL SHAREHOLDER MEETING

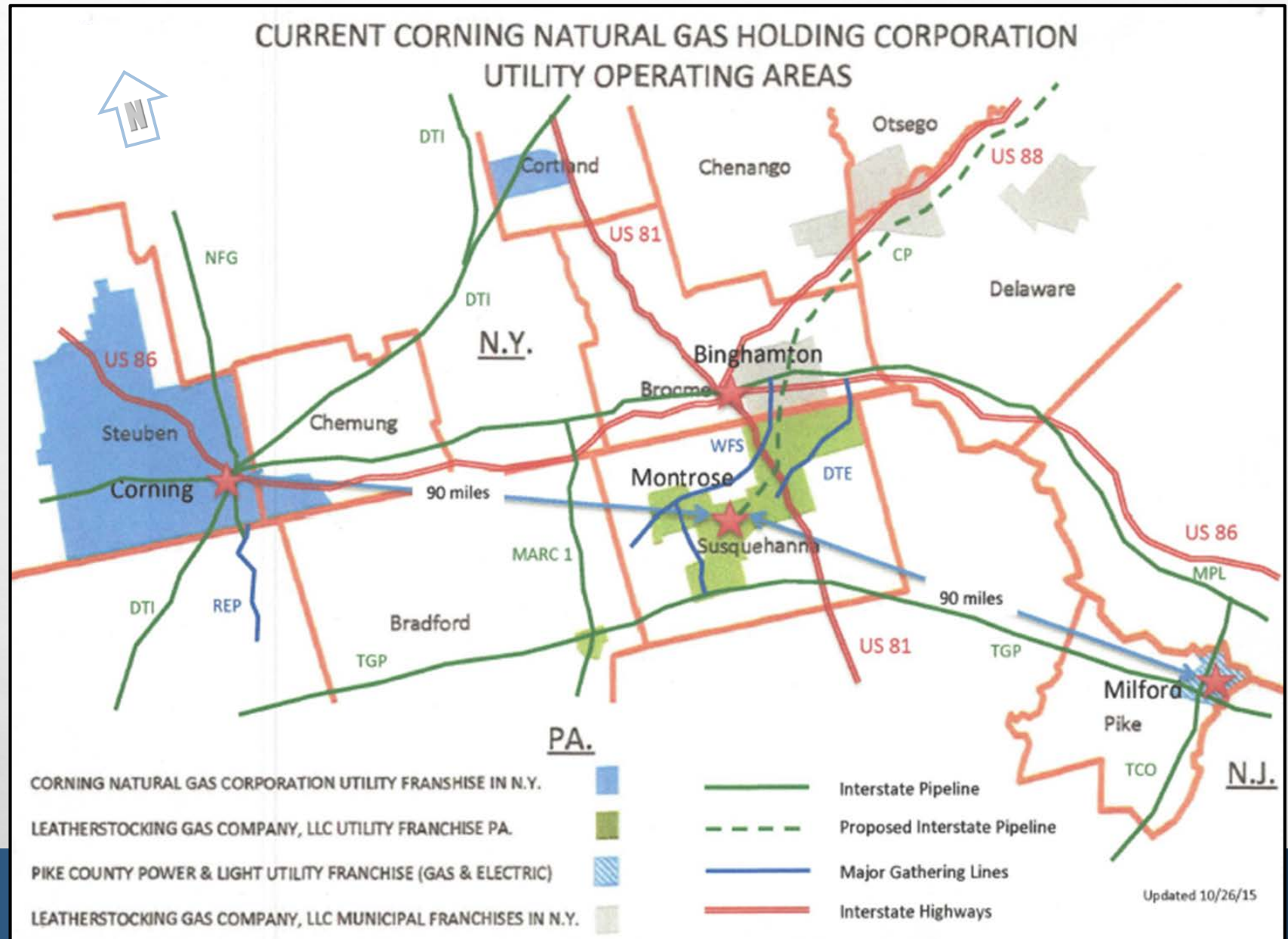


MULTI-YEAR GOALS



1. IMPROVE OUR CORE DISTRIBUTION COMPANIES
2. REACH CRITICAL MASS
3. SOLIDIFY OUR FINANCIAL STRUCTURE

Core Distribution Companies Map



Improve Our Core Distribution Company

- Continued aggressive CNGC systematic gas line replacement and leak repair program
- Since 2007, two-thirds of CNGC infrastructure replaced
- CNGC leaks reduced by 60%
- Finalizing NY rate case that should put CNGC on firm footing for next three years



MULTI-YEAR GOAL 1

Reach Critical Mass

- Leatherstocking Gas Company franchise build out in Montrose, Dimock, and Bridgewater
- LGC moving forward with Windsor, NY, South Montrose, and New Milford
- Purchased Pike County Light & Power adding to family of companies
- Highly accretive Pike purchase increased rate base by 33%
- Increased customer base by 6000, or 40%



MULTI-YEAR GOAL 2

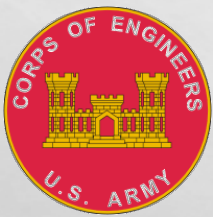
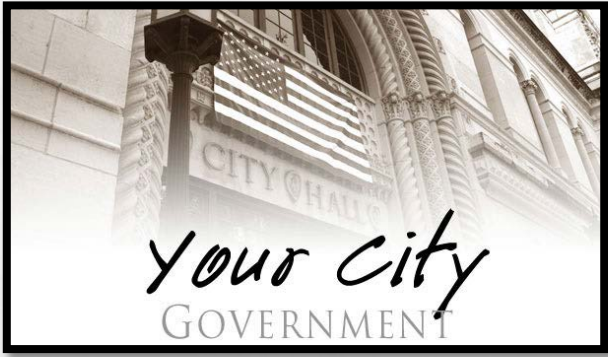


MULTI-YEAR GOAL 3

Solidify Our Financial Structure

- Refinanced nearly all existing debt
 - Issued preferred shares
- Pike purchase added \$18 million in assets to bottom line





- Difficult regulatory environment
 - Cost of new regulations on small company
 - Limited staff and resources to meet all regulatory, operations, growth, and integration challenges

2017 ANTICIPATED ISSUES



2017 EXPECTATIONS & GOALS

- Continue systematic replacement and leak elimination program to enhance safety and reliability
- Grow existing system and connect every economically feasible customer in core territory
- Develop and improve strategies to maximize gas supply management benefits
- Ensure gas supply for growth



- Improve and enhance IT systems
- Complete the CNGC rate case
- Successfully integrate Pike into CNGHC family of companies

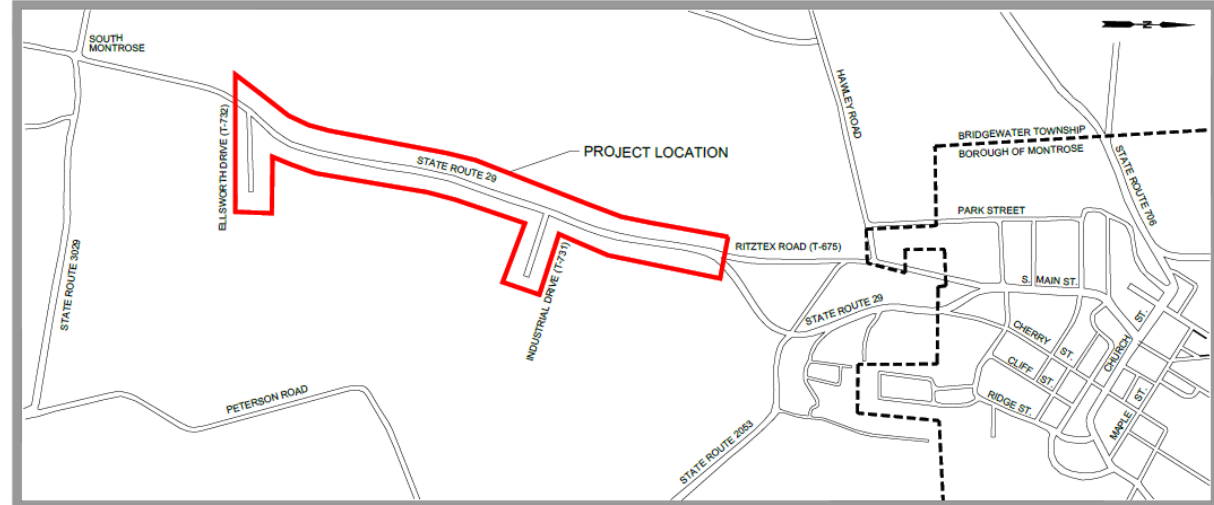
2017 EXPECTATIONS & GOALS

SUMMARY

- 2016 GOOD YEAR
- 2017 GOOD START, DESPITE SOME WARM WEATHER
- CORNING RATE CASE SETTLED WITH PARTIES
- LEATHERSTOCKING GROWTH CONTINUES
- PIKE INTEGRATION MOVING FORWARD
- OVERALL OPERATIONS PERFORMING WELL
- WELL POSITIONED FOR NEXT THREE YEARS

PROPOSED NATURAL GAS MAIN EXTENSION STATE ROUTE 29, ELLSWORTH DRIVE (T-732) & INDUSTRIAL DRIVE (T-731)

Bridgewater Township
Susquehanna County, Pennsylvania





" I will now open the floor for questions."

Thank
You!